



# Upper Cumberland Development District

*"Providing Solutions through Regional Cooperation"*

**Agenda of the Joint Meeting of the Dale Hollow RPO  
Technical Committee and Executive Board  
Leslie Town Centre  
1 West First Street, Cookeville, TN  
December 20, 2018 from 10:30 a.m. to Noon**

1. Welcome & Introduction.....Mark Dudney, RPO Coordinator
2. Technical Committee Call to Order and Roll Call .....Chairperson Sonya King & Mark Dudney
3. Executive Board Call to Order and Roll Call.....Chairperson Richard Driver & Mark Dudney
4. Approval of September 13, 2018 Technical Committee Meeting Minutes.....Sonya King, Technical Committee Chair
5. Approval of September 13, 2018 Executive Board Meeting Minutes.....Richard Driver, Executive Board Chair
6. Voting Procedure for Prioritizing Regional Projects.....Mark Dudney, RPO Coordinator
7. Presentation of Projects to be Prioritized by RPO.....TDOT Staff
8. Call for Submission of Prioritized Lists by TC..... Sonya King, Technical Committee Chair  
*Scores will be tallied while agenda continues*
9. Local Road Safety Initiative Update.....Tom Every, TDOT Transportation Manager
10. Community Transportation Planning Requests.....Andrea Noel, TDOT Region 2 OCT
11. Resurfacing Review/Multimodal.....Sara Elmore, TDOT Region 2 OCT
12. Technical Committee Vote to Accept Ranking.....Sonya King, Technical Committee Chair
13. Executive Board Vote to Affirm Ranking.....Richard Driver, Executive Board Chair
14. Dale Hollow RPO Project Status Updates.....TDOT Staff
15. Other Business
16. Public Comment
17. Adjourn Technical Committee .....Sonya King, Technical Committee Chair
18. Adjourn Executive Board.....Richard Driver, Executive Board Chair

Dale Hollow RPO Technical Committee Meeting Minutes  
Millard Oakley Public Library, Livingston, TN  
September 13, 2018

Members Present: Steve McCoy, Dwight Jewell, Rick Gregory, Mark Farley via proxy Macey Korth, Donnie Dennis, Barbara Powell, Chris Ballou, Evan White. Joey Reagan via proxy Barbara Powell, Bill Scruggs, Sonya King, Ray Evans, Kevin Donaldson, Chuck Sutherland, Kurt Heischmidt via proxy Chuck Sutherland, Jimmy Johnson, Becky Harris, Greg McDonald, Kelly Keisling, Randy Heady, Casey Garner, Audie Cook via proxy Chris Ballou, Tommy Lee via proxy Ray Evans.

Others Present: Jon Zirkle, Stacy Morrison, Andrea Barbour, Ben Danner, Jerry Warren, Amy Fiscus, Ian Preston, Andrea Noel, Jermy Sims, Rick Gregory, William Brewer, Christian Snelgrove, Chris McPhilam, Holly Montooth, MareikeOrtmann, Lisa Cross, Zach Johnson, Kwabena Abouyge, Charley Lyons

**Welcome and Introduction**

Mr. Mark Dudney called the meeting to order and welcomed the Dale Hollow RPO Technical Committee Members and guests to the fall meeting of the RPO. Mr. Dudney introduced the new members to the technical committee: Tara Wohlgemuth, Chuck Sutherland, and Kurt Heischmidt. A roll call for attendance was conducted and Mr. Dudney determined a quorum was met.

**Approval of December 12, 2017 Technical Committee Meeting Minutes**

Mr. Dudney requested a motion to approve the December 12, 2017 meeting of the Technical Committee. Dwight Jewell made a motion to approve the minutes. Evan White seconded the motion passed with a vote of all ayes.

**Election of Technical Committee Officers**

Mr. Dudney opened the floor to nominations and requested a motion to elect a new chair for the Technical Committee. Rick Gregory nominated Sonya King. Donnie Dennis seconded the motion passed with all ayes.

Mr. Dudney opened the floor to nominations and requested a motion to elect a new vice chair for the Technical Committee. Greg McDonald nominated Ray Evans. Evan White seconded the motion passed with all ayes.

**UCHRA Improve Act Competitive Capital Grant**

Ms. Becky Harris of UCHRA gave a presentation to the Committee concerning an IMPROVE Act Competitive Capital Grant Program. The project, which would be \$5.5M, involves placing transit shelters across all counties in the Upper Cumberland which would be located near senior housing facilities. This project would create "livable communities" for the elderly and would allow them access to transit without making a 48-hour reservation. Kevin Donaldson made a motion to recommend. Bill Scruggs seconded the motion passed with a ayes.

### **Multimodal Access Grant**

Mr. Dudney introduced all presenters and explained the scoring process.

Gordonsville gave a brief presentation on the sidewalks they needed.

Gail Dishman of Jamestown presented the proposal of Hwy 52 sidewalks.

Chris Ballou presented on behalf of Lafayette with the proposal of sidewalks on Hwy 10.

Ray Evans of Livingston presented to improve existing sidewalks in the downtown district.

After everyone presented committee members completed score sheets and turned them in for scoring.

### **TDOT Updates**

Andrea Barbour presented on the completion of the Rural Regional Transportation Plan and presented a copy to each table. The final document is a first for the State of Tennessee. Ms. Barbour discussed the top 3 goals for the counties which included; improve safety throughout the region, provide multimodal access, create economic development opportunities, through various transportation initiatives, and address freight traffic along the roads that are unable to handle the capacity. Mareike Ortmann discussed the trend on traffic volume in all the counties represented and discussed the their significance. Stacy Morrison gave direction on how to submit new projects. Donnie Dennis made a motion to recommend. Evan White seconded the motion passed with a ayes.

### **MMAG Ranking Results**

Mr. Dudney announces Lafayette, Gordonsville, Livingston and Jamestown were the top 4 counties to be submitted. Ray Evans made a motion. Donnie Dennis seconded the motion which passed with all ayes.

### **Other Business**

No other business.

### **Public Comment**

No public comment.

### **Adjourn**

With no other business to discuss, Dwight Jewell made a motion to adjourn, seconded by Chris Ballou. The motion passed with a vote of all ayes.

Dale Hollow RPO Executive Board Meeting Minutes  
Millard Oakley Public Library, Livingston, TN  
September 13, 2018

Members Present: Dale Reagan, Jimmy Johnson, Darlene Davis via proxy Gail Dishman, Steve Jones, Richard Driver, Ben Danner, Curtis Hayes, Michael Nesbitt, Randy Heady, Lloyd Williams, Carey Garner, Jeff Mason via proxy Sonja King, Stephen Chambers, Kelly Keisling

Others Present: Jon Zirkle, Stacy Morrison, Andrea Barbour, Jerry Warren, Amy Fiscus, Ian Preston, Andrea Noel, Jermy Sims, Rick Gregory, William Brewer, Christian Snelgrove, Chris McPhlam, Holly Montooth, MareikeOrtmann, Lisa Cross, Zach Johnson, , Charley Lyons, Angela Regitto

### **Welcome and Introduction**

Mr. Mark Dudney called the meeting to order and welcomed the Dale Hollow RPO Executive Board Members, new Mayors Jimmy Johnson, Randy Heady, Cary Garner, Jeff Mason, Stephen Chambers, and guests to the fall meeting of the RPO. A roll call for attendance was conducted and Mr. Dudney determined a quorum was met.

### **Approval of December 12, 2017 Executive Board Meeting Minutes**

Mr. Dudney proceeded to lead the meeting by entertaining a motion to approve the meeting minutes from the December 12, 2017 meeting of the Executive Board. Dale Reagan made a motion to approve the minutes, Curtis Hayes seconded and the motion passed with a vote of all ayes.

### **Election of Chair and Vice Chair**

Mr. Dudney opened the floor for nominations for Chair. Dale Reagan nominates Richard Driver. Curtis Hayes seconded and the motion passed with a vote of all ayes.

Mr. Dudney opened the floor for nominations for vice- chair. Lloyd Williams nominates Dale Reagan. Ben Danner seconded and the motion passed with a vote of all ayes.

### **Roll Call Vote on UCHRA Improve Act Competitive Capital Grant**

Ms. Becky Harris of UCHRA gave a presentation to the Committee concerning an IMPROVE Act Competitive Capital Grant Program. The project, which would be \$5.5M, involves placing transit shelters across all counties in the Upper Cumberland which would be located near senior housing facilities. This project would create "livable communities" for the elderly and would allow them access to transit without making a 48-hour reservation. Curtis Hayes made a motion to recommend. Dale Reagan seconded the motion passed with a ayes.

### **MMAG Ranking Results**

Mr. Dudney announces Lafayette, Gordonsville, Livingston and Jamestown were the top 4 counties to be submitted. Stephen Chambers made a motion. Ben Danner seconded the motion, which passed with all ayes.



### **TDOT Updates**

Andrea Barbour presented on the completion of the Rural Regional Transportation Plan and presented a copy to each table. The final document is a first for the State of Tennessee. Ms. Barbour discussed the top 3 goals for the counties which included: improve safety throughout the region, provide multimodal access, create economic development opportunities, through various transportation initiatives, and address freight traffic along the roads that are unable to handle the capacity. Mareike Ortmann discussed trends in traffic volume in all the counties represented and discussed their significance. Stacy Morrison gave direction on how to submit new projects. Ben Danner made a motion to recommend. Carry Garner seconded the motion passed with a ayes.

### **Other Business**

No other business.

### **Public Comment**

No public comment.

### **Adjourn**

With no other business to discuss, Mayor Ben Danner made a motion to adjourn seconded by Curtis Hayes. The motion passed with a vote of all ayes.

# TENNESSEE RPO PROJECT RANKING CRITERIA

Regional projects on the attached form will be ranked according to the 4 criteria explained below. There are two separate project ranking lists:

- 1.) Projects ready for the right-of-way and/or construction phase, and
- 2.) Projects ready for a preliminary engineering phase.

Each project will be scored individually on regional connectivity, accessibility, economic development, and safety. The projects will then be ranked according to the final scores, with the project receiving the highest score being priority #1, second highest score being priority #2, and so forth.

Technical Committee members will be given a score card, and your name must be written on it in order for your ranking to be counted. Members must be present or a proxy form must have already been submitted for a vote to count. The Technical Committee will score these projects based on the criteria below, and a final tally of the scores will be presented by the RPO Coordinator back to the Technical Committee for a roll call vote. In the event of a tie, the Technical Committee will vote on the tied projects by a roll call vote to determine which takes precedence over the other. The final ranking for the projects based on a total sum of all the points awarded by each member of the Technical committee will be sent to the Executive Committee for discussion and adoption. The final prioritized list will then be submitted to TDOT for their consideration by the end of 2017.

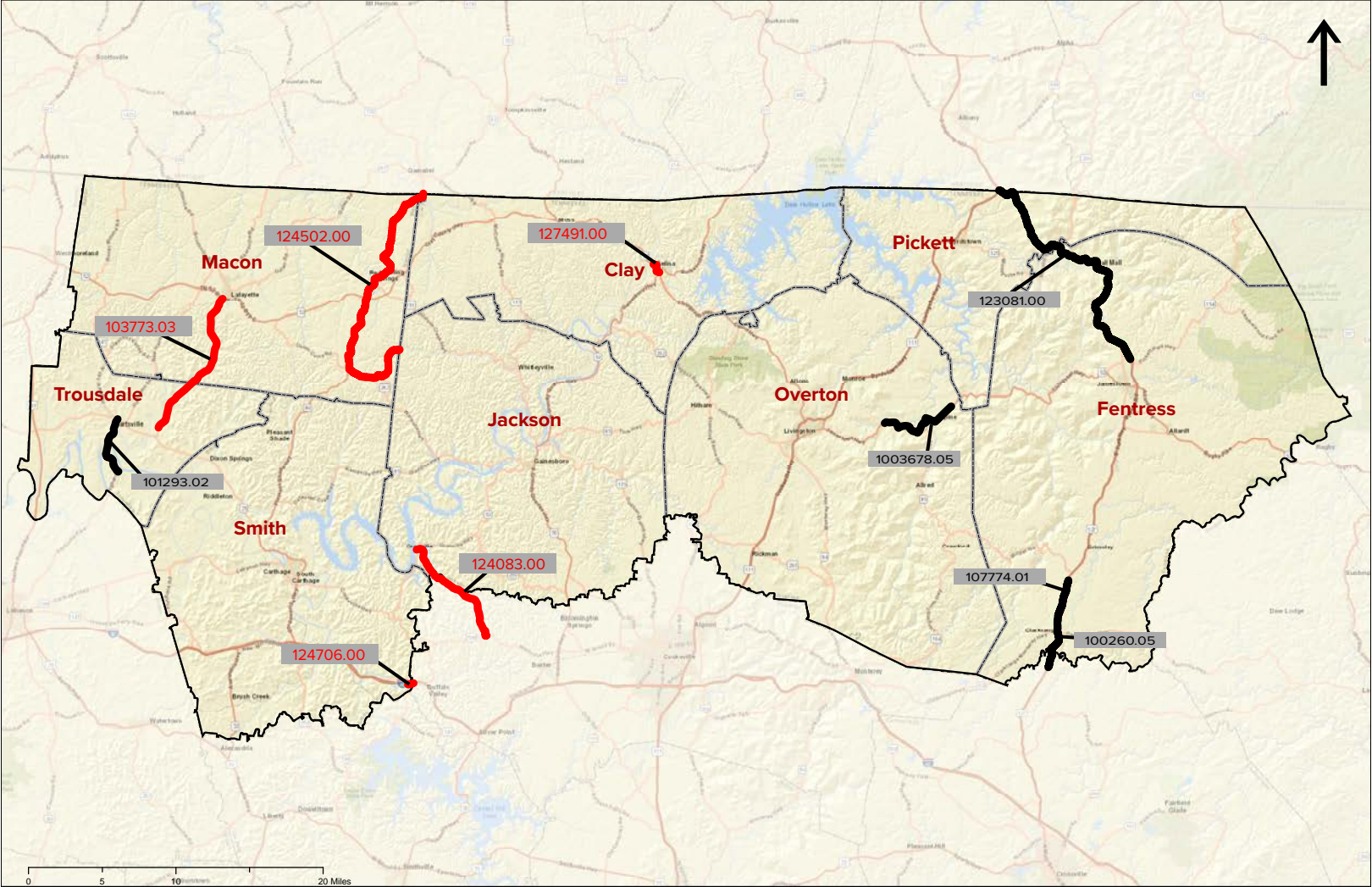
It is proposed that the RPO considers the following 4 criteria in the evaluation and prioritization of projects:

Criteria	Description	Rating Scale
Regional Connectivity	Does road provide connectivity to more than one city or county	1 -5 1-minimum 5-maximum
Accessibility	Does road project provide access to regional services and facilities	1 -5 1-minimum 5-maximum
Economic Development	Does road provide access to economic development	1 -5 1-minimum 5-maximum
Safety	Points to be awarded based on safety concerns on the roadway as perceived by the RPO members.	1 -5 1-minimum 5-maximum

# Dale Hollow RPO's Candidate Projects for TDOT's FY 2019-2021 Three Year Program

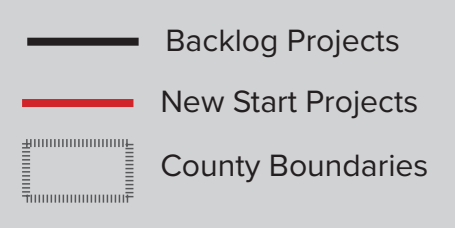
PIN	County	Route	Termini	Phase	RPO Ranking <sup>1</sup>	AADT 2016 <sup>2</sup>	AADT 2040 <sup>3</sup>	Truck AADT 2016 <sup>4</sup>	V/C Ratio 2010 <sup>5</sup>	Section Crash Rate <sup>6</sup>	2017 Ranking
100260.05	Cumberland-Fentress	SR-28 (US-127)	(S. York Hwy.) From near Lowe Road in Cumberland County to Near Little Road Clarkrange (IA)	Construction		4,860 - 7,750	7,417 - 9,968	388 - 389	0.163 - 0.228	0.520	1
123081.00	Fentress-Pickett	SR-28 (US-127)	(S. York Hwy.) From North of Jamestown to SR-111 (Spot Improvements) (IA)	Right-of-Way		1,080 - 4,120	1,541 - 5,013	165 - 178	0.035 - 0.121	0.468	4
107774.01	Fentress	SR-28 (US-127)	(S. York Hwy.) From Near Little Road in Clarkrange to North Kilby Road (IA)	Construction		7,750	9,770 - 9,968	338	0.226 - 0.228	0.435	2
103678.05	Overton	SR-52	Intersections at Claude Smith Road, SR-85, and Bolestown Road (EPD/PHASE 2)	Construction		660 - 2,450	886 - 3,242	49 - 54	0.020 - 0.088	0.521	5
101293.02	Trousdale	SR-141	SR-141, North of SR-10 to Near the Intersection of Cedar Bluff Rd	Construction		2,380 - 4,840	4,651 - 9,067	143 - 194	0.061 - 0.196	0.57	3

PIN	County	Route	Termini	Phase	RPO Ranking <sup>1</sup>	AADT 2016 <sup>2</sup>	AADT 2040 <sup>3</sup>	Truck AADT 2016 <sup>4</sup>	V/C Ratio 2010 <sup>5</sup>	Section Crash Rate <sup>6</sup>	2017 Ranking
127491.00 <sup>7</sup>	Clay	SR-52	From Near Kyle St. to Existing SR-52 Near Washington St. (Celina Bypass)	PE		5,010 - 5,110	9,107	351 - 358	0.15 - 0.16	0.41	N/A
124083.00	Jackson-Putnam	SR-96	(Martin Creek Rd.) From SR-53 to US 70N (SR-24), (Spot Improvements-Safety Improvements)	PE		140 - 240	236 - 524	10 - 12	0.007 - 0.031	1.48	2
124502.00	Macon	SR-56	Various safety projects	PE		70 - 3,290	98 - 4,494	75 - 101	0.003 - 0.132	N/A	4
124706.00	Smith	I-40	“Caney Fork River” Welcome Center renovation	PE		42,640	49,557 - 51,054	10,660	0.319	0.286	5
103773.03	Trousdale-Macon	SR-10	(Hartsville Rd.) Safety Improvements from Lafayette to Hartsville	PE		4,160 - 4,860	5,227 - 5,913	292 - 398	0.119 - 0.138	0.404	1



## Data Notes:

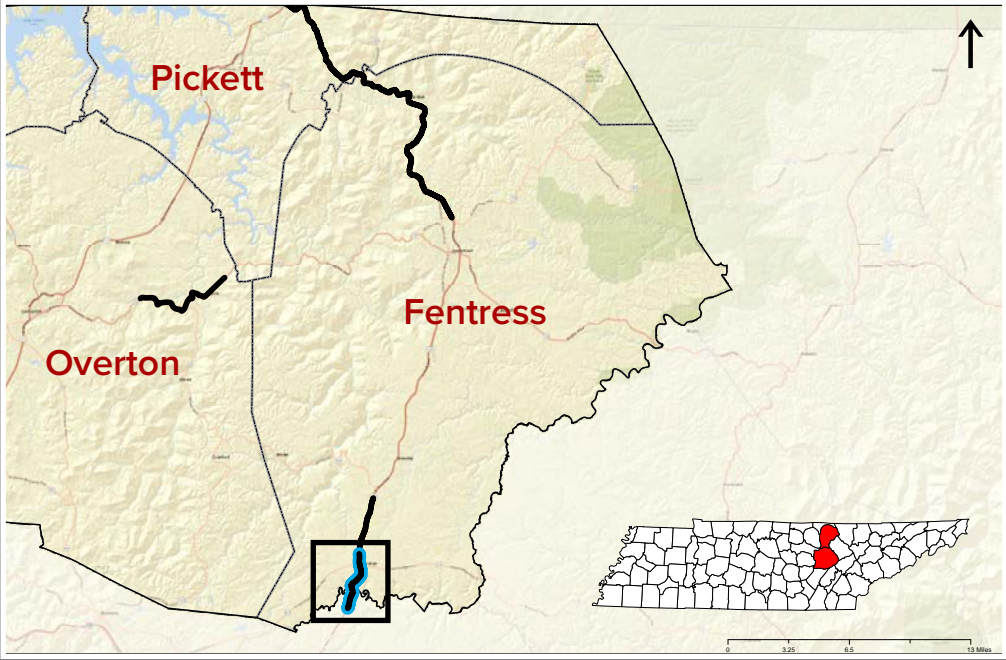
- 1 - Overall project priority, to be determined by RPO.
- 2 - Average Annual Daily Traffic, TRIMS 2016 Data.
- 3 - Forecasted Average Annual Daily Traffic for the year 2040, forecasted data using the Statewide Travel Demand Model.
- 4 - Average Annual Daily Traffic for Trucks, TRIMS 2016 Data.
- 5 - Traffic Volume/Traffic Capacity for the year 2010, calculated using the Statewide Travel Demand Model. A V/C ratio of 0.5 is generally considered average and as the value increases and nears 1, it represents a road that is becoming more congested.
- 6 - Section crash rates are the number of crashes per million vehicle miles. Higher numbers do not necessarily mean that more crashes occur and may or may not signify safety deficiencies. These crash rates were calculated using data from 2012-2014 and compared against the 2012-2014 statewide average for each road type.
- 7 - Indicates new project pin added this year





SR-28 (US-127)  
Cumberland-Fentress  
Counties, 100260.05

PIN	Project Type & Description <sup>1</sup>	Status & Funding <sup>2</sup>	Cost <sup>3</sup>	2016 AADT <sup>4</sup>	2040 AADT <sup>5</sup>	2016 Truck AADT <sup>6</sup>	2040 Truck AADT <sup>7</sup>	2010 V/C Ratio <sup>8</sup>	2040 V/C Ratio <sup>9</sup>	Section Crash Rate <sup>10</sup>
100260.05	(S. York Hwy.) From near Lowe Road in Cumberland County to Near Little Road Clarkrange (IA) - <b>Widen</b>	Active PE:06/07 ROW:10/11	\$46,600,000	4,860 - 7,750	7,417 - 9,968	388 - 389	977 - 1,820	0.163 - 0.228	0.232 - 0.312	0.520



Data Notes:

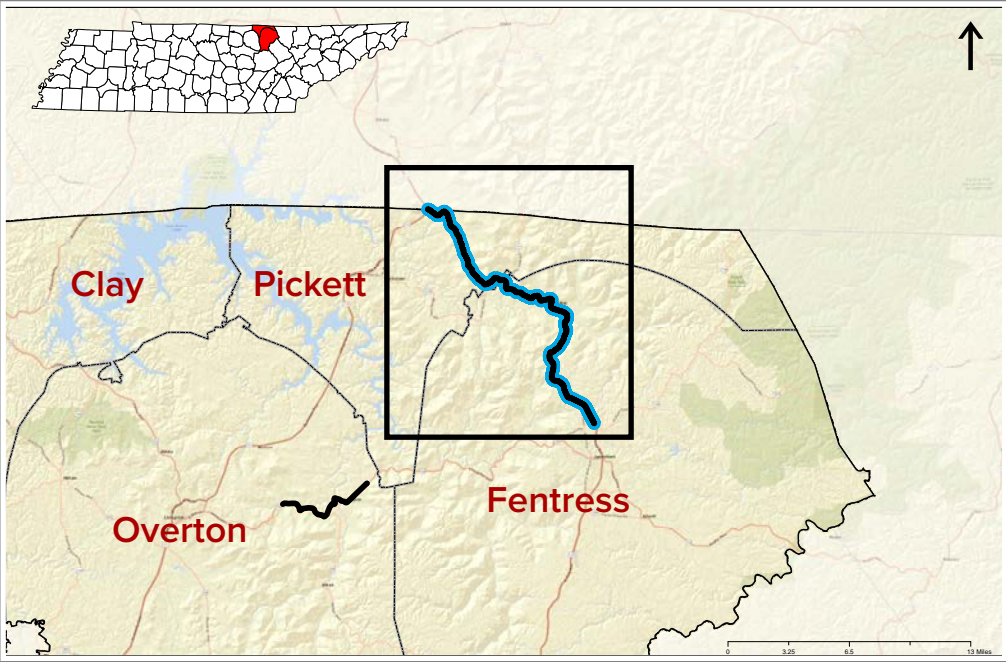
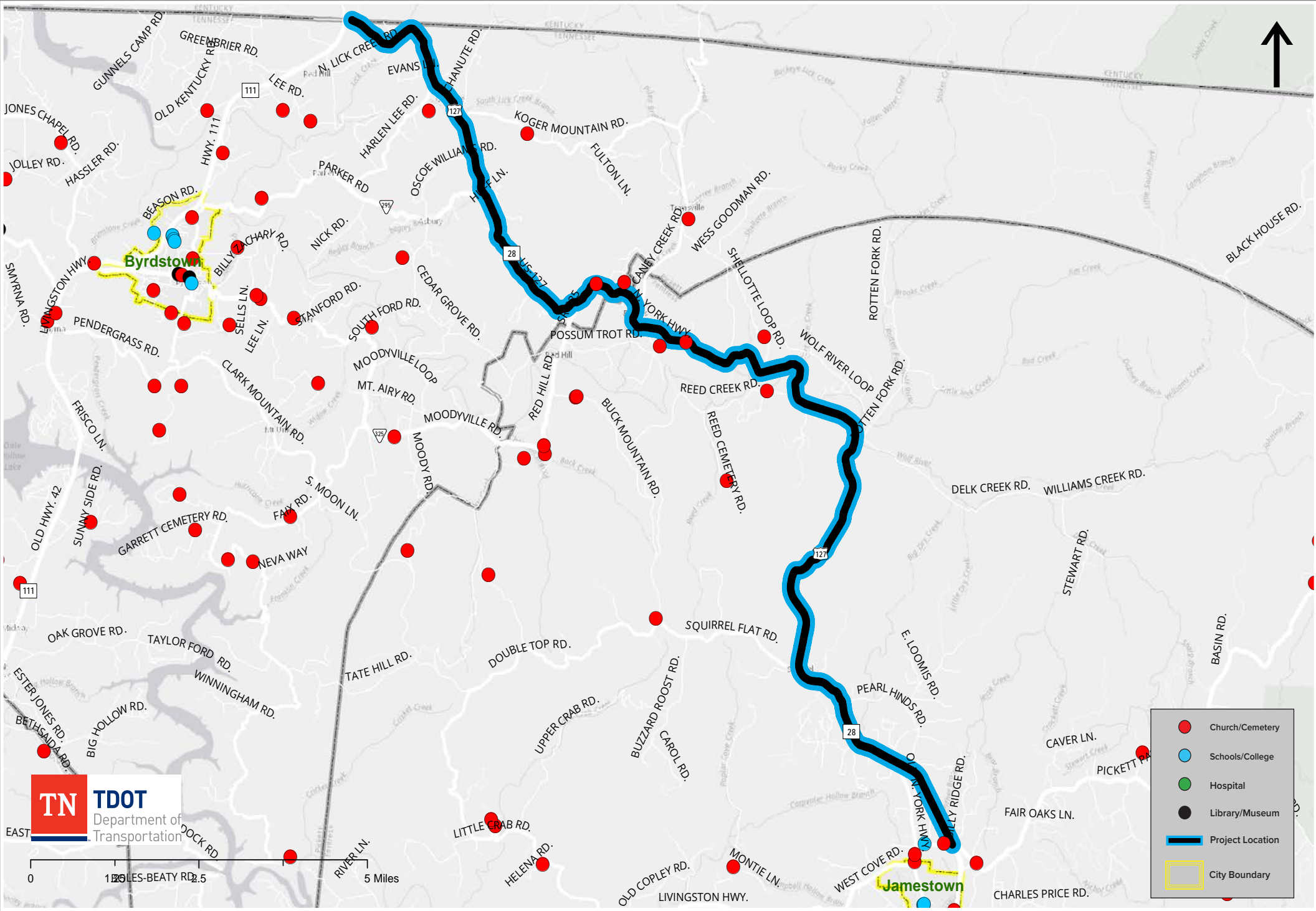
- 1-3 - Project Type & Description, Status & Funding, and Cost information were gathered from PPRM (Project Programming Resource Management) and the Statewide Project Overview Tracker (SPOT) Map.
- 4 - Average Annual Daily Traffic, TRIMS 2016 Data.
- 5 - Forecasted Average Annual Daily Traffic for the year 2040, forecasted data using the Statewide Travel Demand Model.
- 6 - Average Annual Daily Traffic for Trucks, TRIMS 2016 Data.
- 7 - Forecasted Average Annual Daily Truck Traffic for the year 2040, forecasted data using the Statewide Travel Demand Model.
- 8 - Traffic Volume/Traffic Capacity for the year 2010, calculated using the Statewide Travel Demand Model. A V/C ratio of 0.5 is generally considered average and as the value increases and nears 1, it represents a road that is becoming more congested.
- 9 - Traffic Volume/Traffic Capacity for the year 2040, calculated using the Statewide Travel Demand Model. A V/C ratio of 0.5 is generally considered average and as the value increases and nears 1, it represents a road that is becoming more congested.
- 10 - Section crash rates are the number of crashes per million vehicle miles. Higher numbers do not necessarily mean that more crashes occur and may or may not signify safety deficiencies. These crash rates were calculated using data from 2012-2014 and compared against the 2012-2014 statewide average for each road type. The crash rates were then measured against the Statewide Crash Average for each individual type of road to determine the appropriate color ramp.





SR-28 (US-127)  
Fentress-Pickett  
Counties, 123081.00

PIN	Project Type & Description <sup>1</sup>	Status & Funding <sup>2</sup>	Cost <sup>3</sup>	2016 AADT <sup>4</sup>	2040 AADT <sup>5</sup>	2016 Truck AADT <sup>6</sup>	2040 Truck AADT <sup>7</sup>	2010 V/C Ratio <sup>8</sup>	2040 V/C Ratio <sup>9</sup>	Section Crash Rate <sup>10</sup>
123081.00	(S. York Hwy.) From North of Jamestown to SR-111 (Spot Improvements) (IA) - Miscellaneous Improvements	Active PE:17/18	\$10,000,000	1,080 - 4,120	1,541 - 5,013	165 - 178	172 - 869	0.035 - 0.121	0.047 - 0.156	0.468



Data Notes:

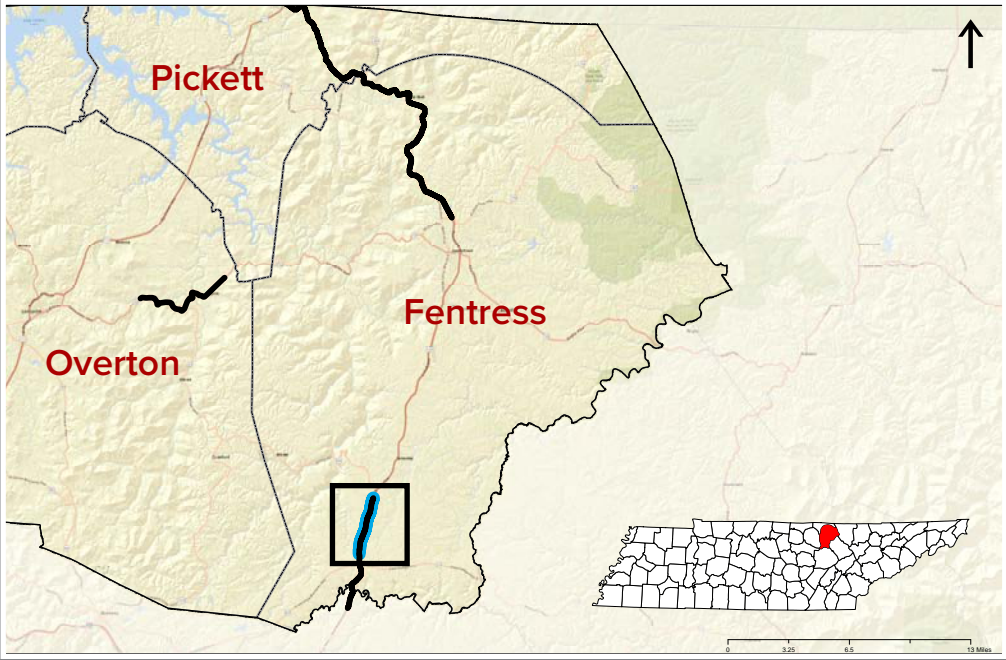
- 1-3 - Project Type & Description, Status & Funding, and Cost information were gathered from PPRM (Project Programming Resource Management) and the Statewide Project Overview Tracker (SPOT) Map.
- 4 - Average Annual Daily Traffic, TRIMS 2016 Data.
- 5 - Forecasted Average Annual Daily Traffic for the year 2040, forecasted data using the Statewide Travel Demand Model.
- 6 - Average Annual Daily Traffic for Trucks, TRIMS 2016 Data.
- 7 - Forecasted Average Annual Daily Truck Traffic for the year 2040, forecasted data using the Statewide Travel Demand Model.
- 8 - Traffic Volume/Traffic Capacity for the year 2010, calculated using the Statewide Travel Demand Model. A V/C ratio of 0.5 is generally considered average and as the value increases and nears 1, it represents a road that is becoming more congested.
- 9 - Traffic Volume/Traffic Capacity for the year 2040, calculated using the Statewide Travel Demand Model. A V/C ratio of 0.5 is generally considered average and as the value increases and nears 1, it represents a road that is becoming more congested.
- 10 - Section crash rates are the number of crashes per million vehicle miles. Higher numbers do not necessarily mean that more crashes occur and may or may not signify safety deficiencies. These crash rates were calculated using data from 2012-2014 and compared against the 2012-2014 statewide average for each road type. The crash rates were then measured against the Statewide Crash Average for each individual type of road to determine the appropriate color ramp.





SR-28 (US-127)  
Fentress County, 107774.01

PIN	Project Type & Description <sup>1</sup>	Status & Funding <sup>2</sup>	Cost <sup>3</sup>	2016 AADT <sup>4</sup>	2040 AADT <sup>5</sup>	2016 Truck AADT <sup>6</sup>	2040 Truck AADT <sup>7</sup>	2010 V/C Ratio <sup>8</sup>	2040 V/C Ratio <sup>9</sup>	Section Crash Rate <sup>10</sup>
107774.01	(S. York Hwy.) From Near Little Road in Clarkrange to North Kilby Road (IA) - <b>Widen</b>	Active PE:11/12 ROW: 16/17	\$19,800,000	7,750	9,770 - 9,968	338	1,507 - 1,821	0.226 - 0.228	0.303 - 0.312	0.435



Data Notes:

- 1-3 - Project Type & Description, Status & Funding, and Cost information were gathered from PPRM (Project Programming Resource Management) and the Statewide Project Overview Tracker (SPOT) Map.
- 4 - Average Annual Daily Traffic, TRIMS 2016 Data.
- 5 - Forecasted Average Annual Daily Traffic for the year 2040, forecasted data using the Statewide Travel Demand Model.
- 6 - Average Annual Daily Traffic for Trucks, TRIMS 2016 Data.
- 7 - Forecasted Average Annual Daily Truck Traffic for the year 2040, forecasted data using the Statewide Travel Demand Model.
- 8 - Traffic Volume/Traffic Capacity for the year 2010, calculated using the Statewide Travel Demand Model. A V/C ratio of 0.5 is generally considered average and as the value increases and nears 1, it represents a road that is becoming more congested.
- 9 - Traffic Volume/Traffic Capacity for the year 2040, calculated using the Statewide Travel Demand Model. A V/C ratio of 0.5 is generally considered average and as the value increases and nears 1, it represents a road that is becoming more congested.
- 10 - Section crash rates are the number of crashes per million vehicle miles. Higher numbers do not necessarily mean that more crashes occur and may or may not signify safety deficiencies. These crash rates were calculated using data from 2012-2014 and compared against the 2012-2014 statewide average for each road type. The crash rates were then measured against the Statewide Crash Average for each individual type of road to determine the appropriate color ramp.

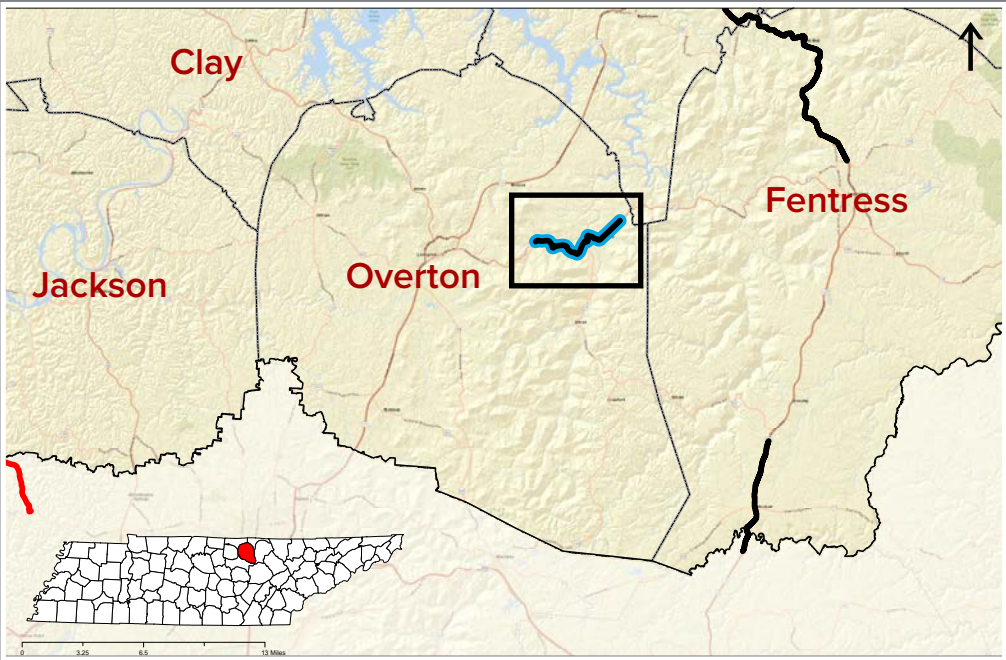




SR-52

Overton County, 103678.05

PIN	Project Type & Description <sup>1</sup>	Status & Funding <sup>2</sup>	Cost <sup>3</sup>	2016 AADT <sup>4</sup>	2040 AADT <sup>5</sup>	2016 Truck AADT <sup>6</sup>	2040 Truck AADT <sup>7</sup>	2010 V/C Ratio <sup>8</sup>	2040 V/C Ratio <sup>9</sup>	Section Crash Rate <sup>10</sup>
103678.05	Intersections at Claude Smith Road, SR-85, and Bolestown Road (EPD/PHASE 2) - <b>Miscellaneous Safety Improvements</b>	Active	\$600,000	660 - 2,450	886 - 3,242	49 - 54	137 - 304	0.020 - 0.088	0.029 - 0.111	0.521



**Data Notes:**

1 - 3 - Project Type & Description, Status & Funding, and Cost information were gathered from PPRM (Project Programming Resource Management) and the Statewide Project Overview Tracker (SPOT) Map.

4 - Average Annual Daily Traffic, TRIMS 2016 Data.

5 - Forecasted Average Annual Daily Traffic for the year 2040, forecasted data using the Statewide Travel Demand Model.

6 - Average Annual Daily Traffic for Trucks, TRIMS 2016 Data.

7 - Forecasted Average Annual Daily Truck Traffic for the year 2040, forecasted data using the Statewide Travel Demand Model.

8 - Traffic Volume/Traffic Capacity for the year 2010, calculated using the Statewide Travel Demand Model. A V/C ratio of 0.5 is generally considered average and as the value increases and nears 1, it represents a road that is becoming more congested.

9 - Traffic Volume/Traffic Capacity for the year 2040, calculated using the Statewide Travel Demand Model. A V/C ratio of 0.5 is generally considered average and as the value increases and nears 1, it represents a road that is becoming more congested.

10 - Section crash rates are the number of crashes per million vehicle miles. Higher numbers do not necessarily mean that more crashes occur and may or may not signify safety deficiencies. These crash rates were calculated using data from 2012-2014 and compared against the 2012-2014 statewide average for each road type. The crash rates were then measured against the Statewide Crash Average for each individual type of road to determine the appropriate color ramp.

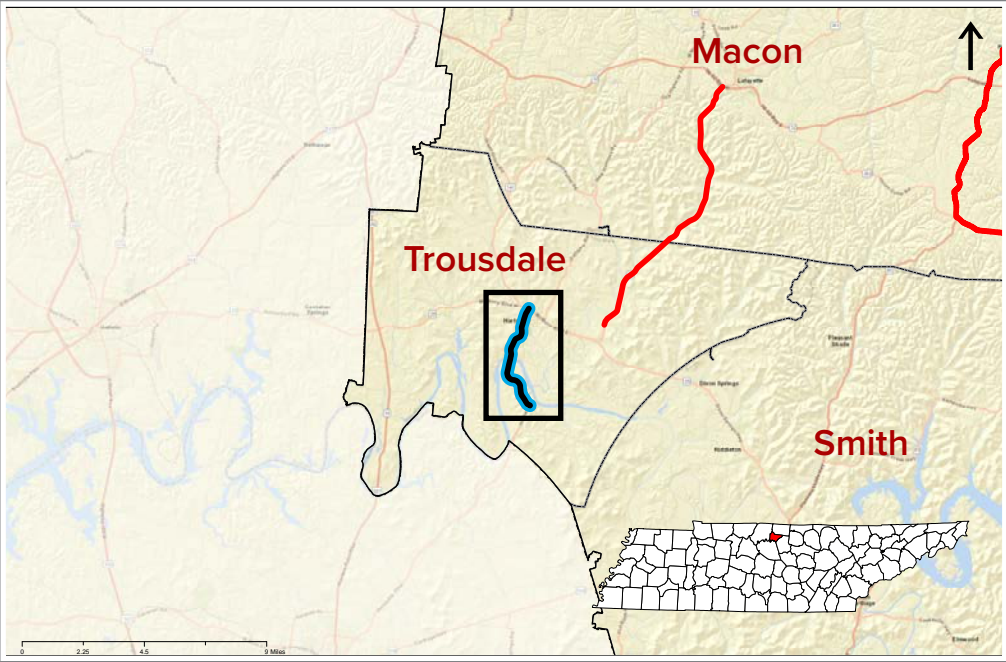
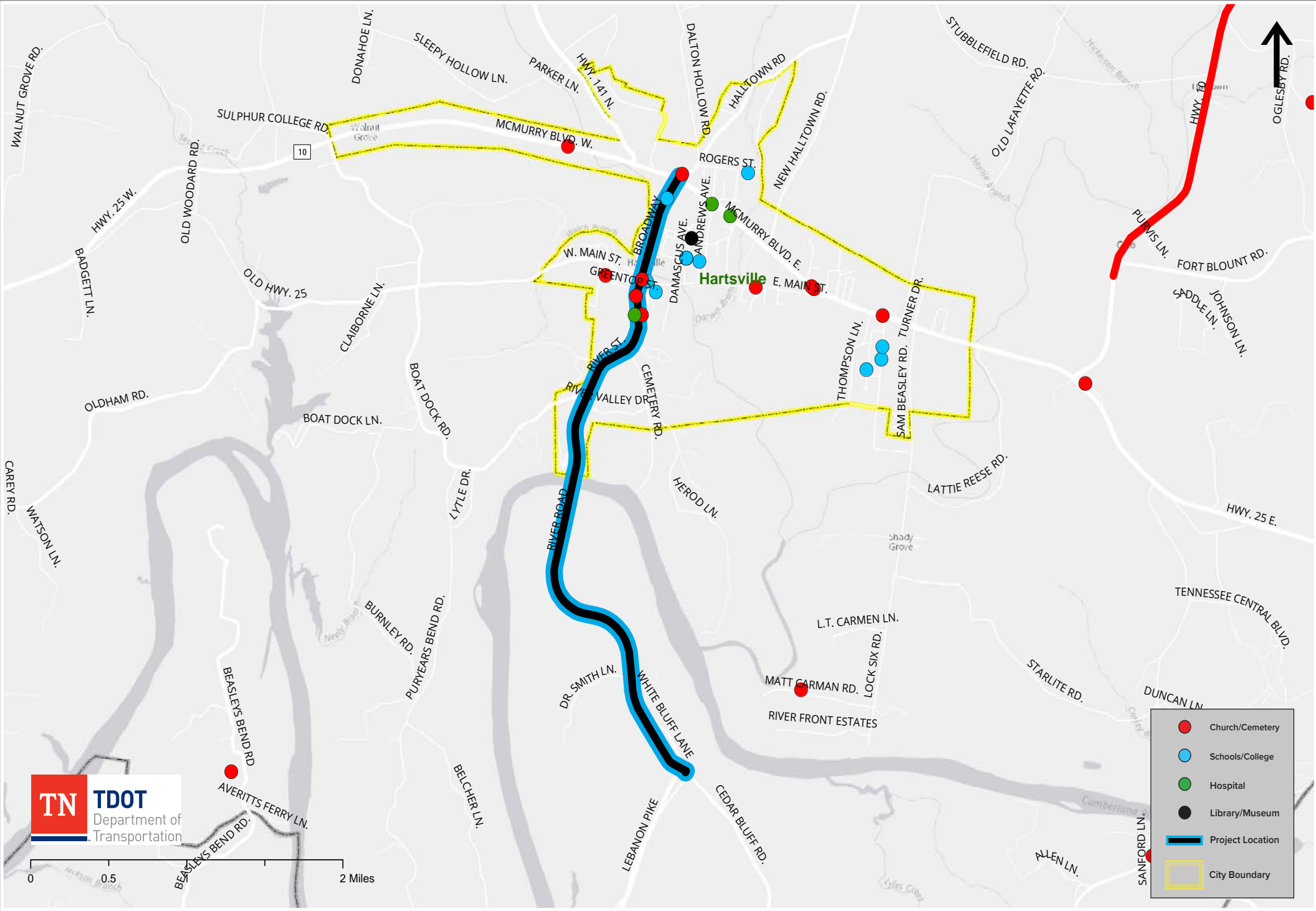




SR-141

Trousdale County, 101293.02

PIN	Project Type & Description <sup>1</sup>	Status & Funding <sup>2</sup>	Cost <sup>3</sup>	2016 AADT <sup>4</sup>	2040 AADT <sup>5</sup>	2016 Truck AADT <sup>6</sup>	2040 Truck AADT <sup>7</sup>	2010 V/C Ratio <sup>8</sup>	2040 V/C Ratio <sup>9</sup>	Section Crash Rate <sup>10</sup>
101293.02	From Hartsville Pike and Cedar Bluff Intersection to North of SR-10 - <b>Super 2-Lane on 4-Lane ROW, including turn lanes (on new alignment)</b>	Active	\$23,200,000	2,380 - 4,840	4,651 - 9,067	143 - 194	301 - 542	0.061 - 0.196	0.154 - 0.311	0.57



Data Notes:

- 1-3 - Project Type & Description, Status & Funding, and Cost information were gathered from PPRM (Project Programming Resource Management) and the Statewide Project Overview Tracker (SPOT) Map.
- 4 - Average Annual Daily Traffic, TRIMS 2016 Data.
- 5 - Forecasted Average Annual Daily Traffic for the year 2040, forecasted data using the Statewide Travel Demand Model.
- 6 - Average Annual Daily Traffic for Trucks, TRIMS 2016 Data.
- 7 - Forecasted Average Annual Daily Truck Traffic for the year 2040, forecasted data using the Statewide Travel Demand Model.
- 8 - Traffic Volume/Traffic Capacity for the year 2010, calculated using the Statewide Travel Demand Model. A V/C ratio of 0.5 is generally considered average and as the value increases and nears 1, it represents a road that is becoming more congested.
- 9 - Traffic Volume/Traffic Capacity for the year 2040, calculated using the Statewide Travel Demand Model. A V/C ratio of 0.5 is generally considered average and as the value increases and nears 1, it represents a road that is becoming more congested.
- 10 - Section crash rates are the number of crashes per million vehicle miles. Higher numbers do not necessarily mean that more crashes occur and may or may not signify safety deficiencies. These crash rates were calculated using data from 2012-2014 and compared against the 2012-2014 statewide average for each road type. The crash rates were then measured against the Statewide Crash Average for each individual type of road to determine the appropriate color ramp.

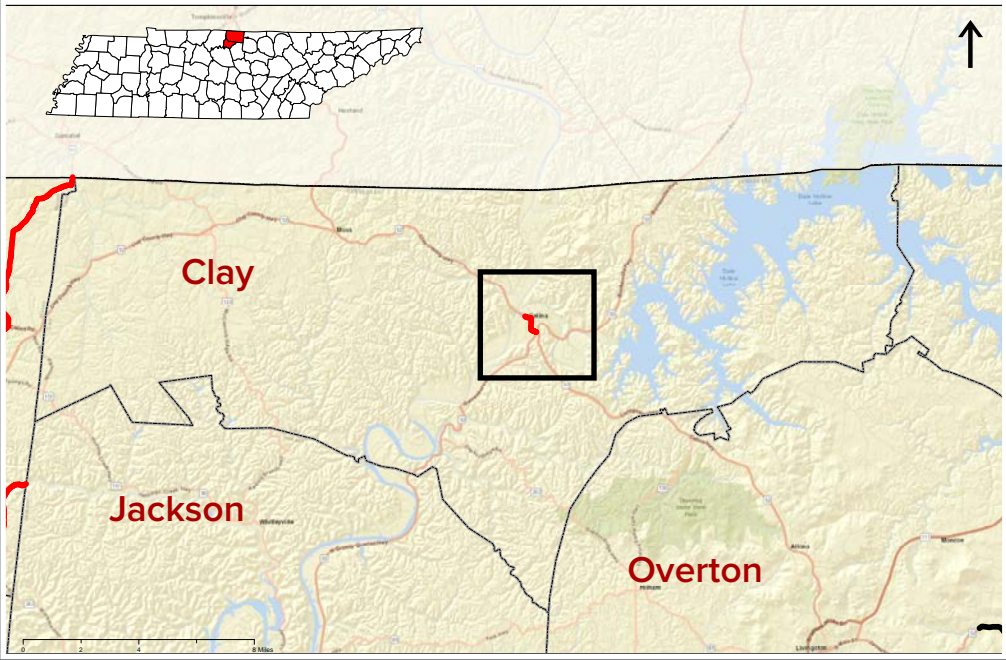
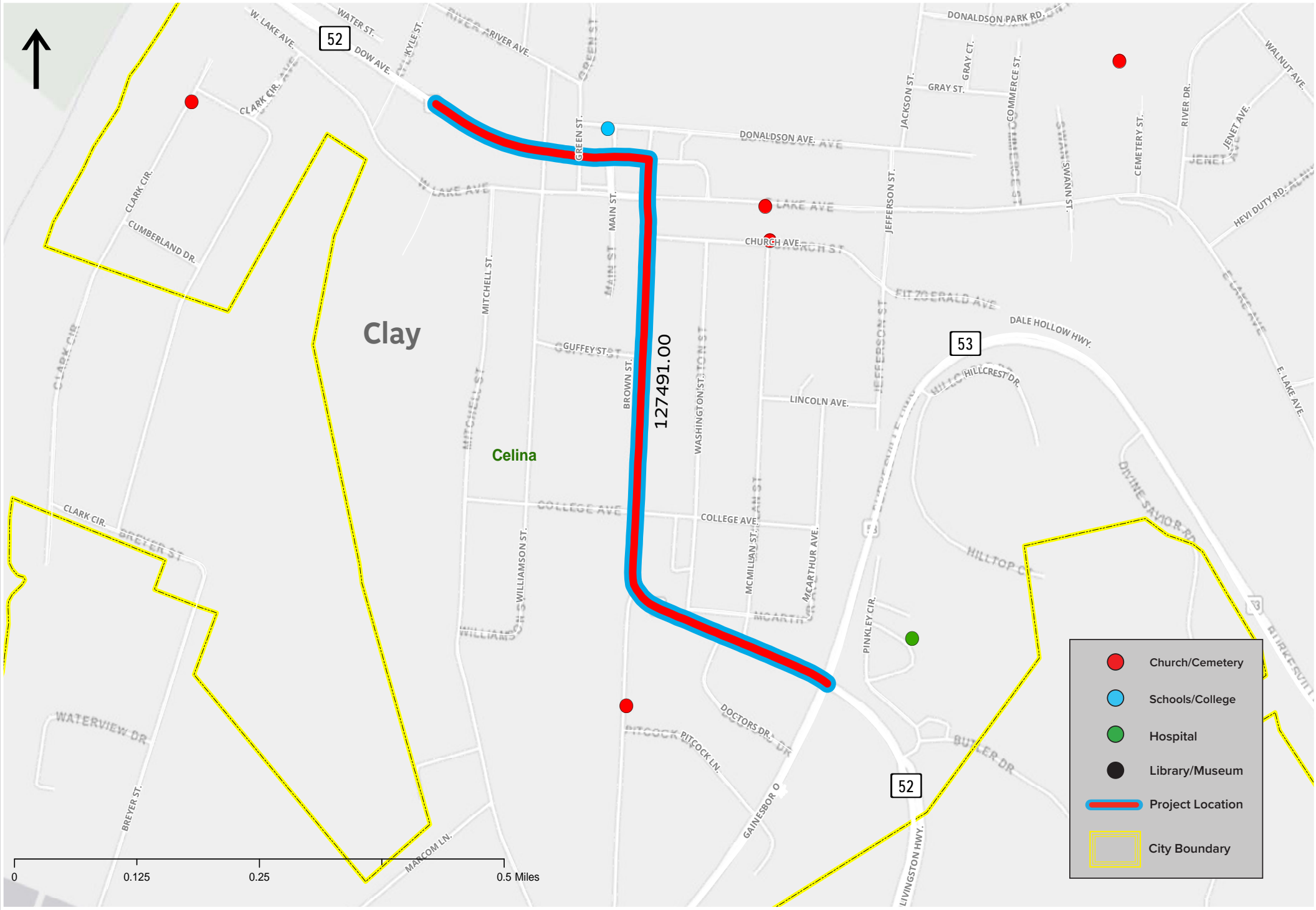




SR-52

Clay County, 127491.00

PIN	Project Type & Description <sup>1</sup>	Status & Funding <sup>2</sup>	Cost <sup>3</sup>	2016 AADT <sup>4</sup>	2040 AADT <sup>5</sup>	2016 Truck AADT <sup>6</sup>	2040 Truck AADT <sup>7</sup>	2010 V/C Ratio <sup>8</sup>	2040 V/C Ratio <sup>9</sup>	Section Crash Rate <sup>10</sup>
127491.00	From Near Kyl St. to Existing SR-52 Near Washington St. (Celina Bypass)	Active  PE:21/22 ROW:22/23	\$10,500,000	5,010 - 5,110	9,107	351 - 358	3,600	0.15 - 0.16	0.28 - 0.30	0.41



Data Notes:

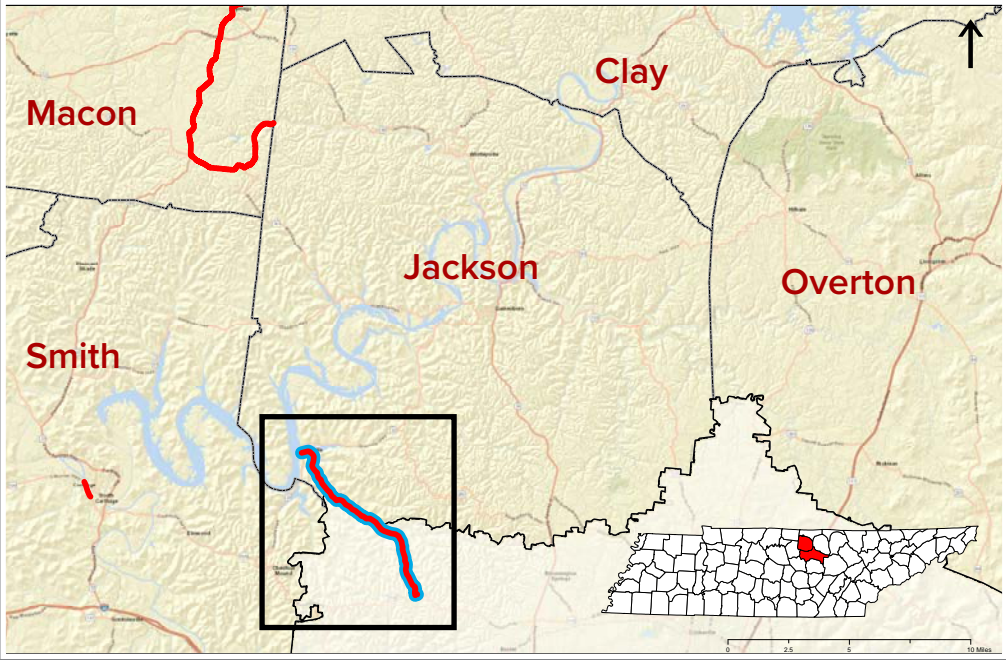
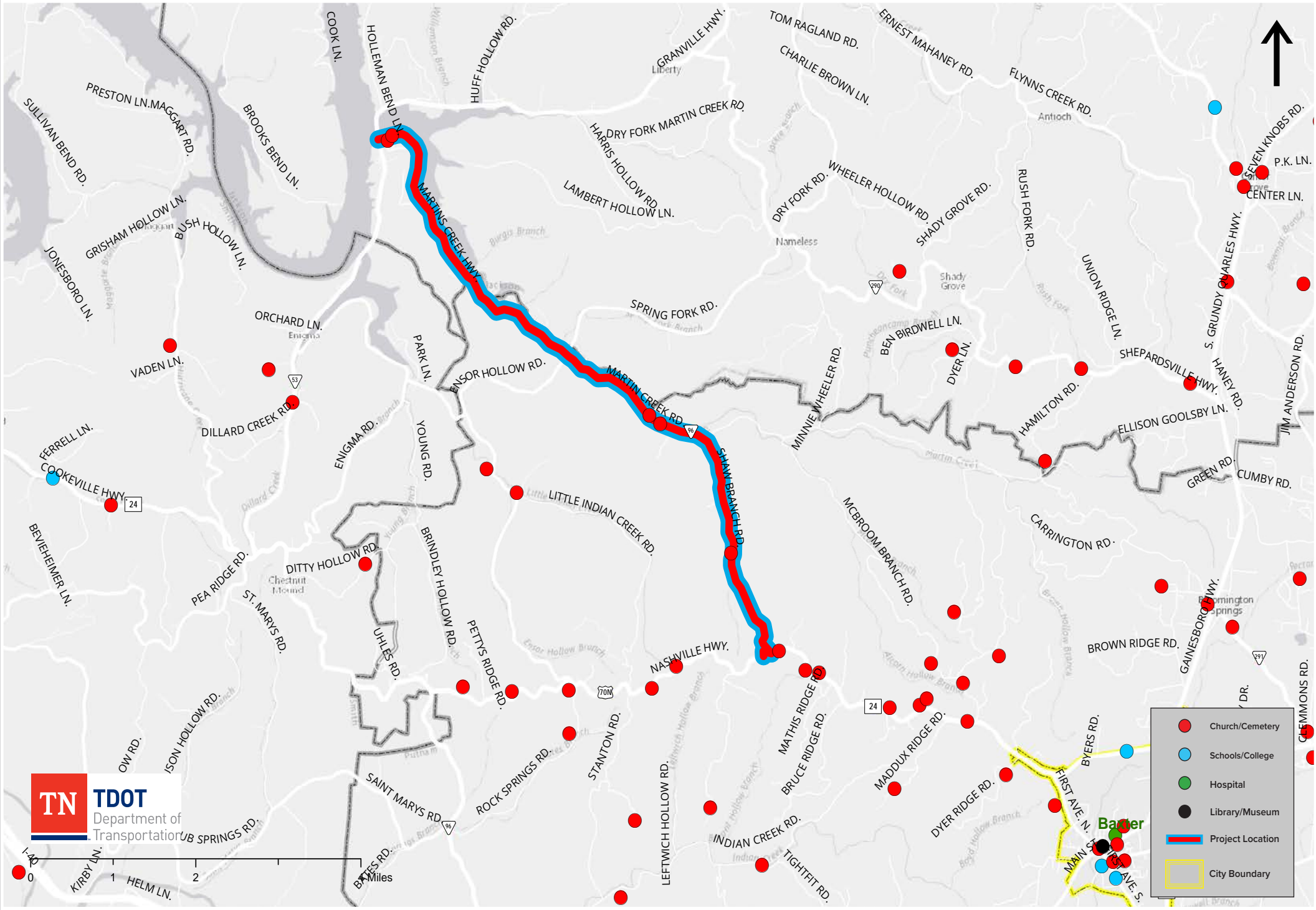
- 1-3 - Project Type & Description, Status & Funding, and Cost information were gathered from PPRM (Project Programming Resource Management) and the Statewide Project Overview Tracker (SPOT) Map.
- 4 - Average Annual Daily Traffic, TRIMS 2016 Data.
- 5 - Forecasted Average Annual Daily Traffic for the year 2040, forecasted data using the Statewide Travel Demand Model.
- 6 - Average Annual Daily Traffic for Trucks, TRIMS 2016 Data.
- 7 - Forecasted Average Annual Daily Truck Traffic for the year 2040, forecasted data using the Statewide Travel Demand Model.
- 8 - Traffic Volume/Traffic Capacity for the year 2010, calculated using the Statewide Travel Demand Model. A V/C ratio of 0.5 is generally considered average and as the value increases and nears 1, it represents a road that is becoming more congested.
- 9 - Traffic Volume/Traffic Capacity for the year 2040, calculated using the Statewide Travel Demand Model. A V/C ratio of 0.5 is generally considered average and as the value increases and nears 1, it represents a road that is becoming more congested.
- 10 - Section crash rates are the number of crashes per million vehicle miles. Higher numbers do not necessarily mean that more crashes occur and may or may not signify safety deficiencies. These crash rates were calculated using data from 2012-2014 and compared against the 2012-2014 statewide average for each road type. The crash rates were then measured against the Statewide Crash Average for each individual type of road to determine the appropriate color ramp.





SR-96  
Jackson-Putnam  
Counties, 124083.00

PIN	Project Type & Description <sup>1</sup>	Status & Funding <sup>2</sup>	Cost <sup>3</sup>	2016 AADT <sup>4</sup>	2040 AADT <sup>5</sup>	2016 Truck AADT <sup>6</sup>	2040 Truck AADT <sup>7</sup>	2010 V/C Ratio <sup>8</sup>	2040 V/C Ratio <sup>9</sup>	Section Crash Rate <sup>10</sup>
124083.00	(Martin Creek Rd.) From SR-53 to US-70n (SR-24), (Spot Improvements-Safety Improvements) - <b>Miscellaneous Safety Improvements</b>	Active	\$10,000,000	140 - 240	236 - 524	10 - 12	0 - 40	0.007 - 0.031	0.008 - 0.042	1.480



Data Notes:

- 1-3 - Project Type & Description, Status & Funding, and Cost information were gathered from PPRM (Project Programming Resource Management) and the Statewide Project Overview Tracker (SPOT) Map.
- 4 - Average Annual Daily Traffic, TRIMS 2016 Data.
- 5 - Forecasted Average Annual Daily Traffic for the year 2040, forecasted data using the Statewide Travel Demand Model.
- 6 - Average Annual Daily Traffic for Trucks, TRIMS 2016 Data.
- 7 - Forecasted Average Annual Daily Truck Traffic for the year 2040, forecasted data using the Statewide Travel Demand Model.
- 8 - Traffic Volume/Traffic Capacity for the year 2010, calculated using the Statewide Travel Demand Model. A V/C ratio of 0.5 is generally considered average and as the value increases and nears 1, it represents a road that is becoming more congested.
- 9 - Traffic Volume/Traffic Capacity for the year 2040, calculated using the Statewide Travel Demand Model. A V/C ratio of 0.5 is generally considered average and as the value increases and nears 1, it represents a road that is becoming more congested.
- 10 - Section crash rates are the number of crashes per million vehicle miles. Higher numbers do not necessarily mean that more crashes occur and may or may not signify safety deficiencies. These crash rates were calculated using data from 2012-2014 and compared against the 2012-2014 statewide average for each road type. The crash rates were then measured against the Statewide Crash Average for each individual type of road to determine the appropriate color ramp.

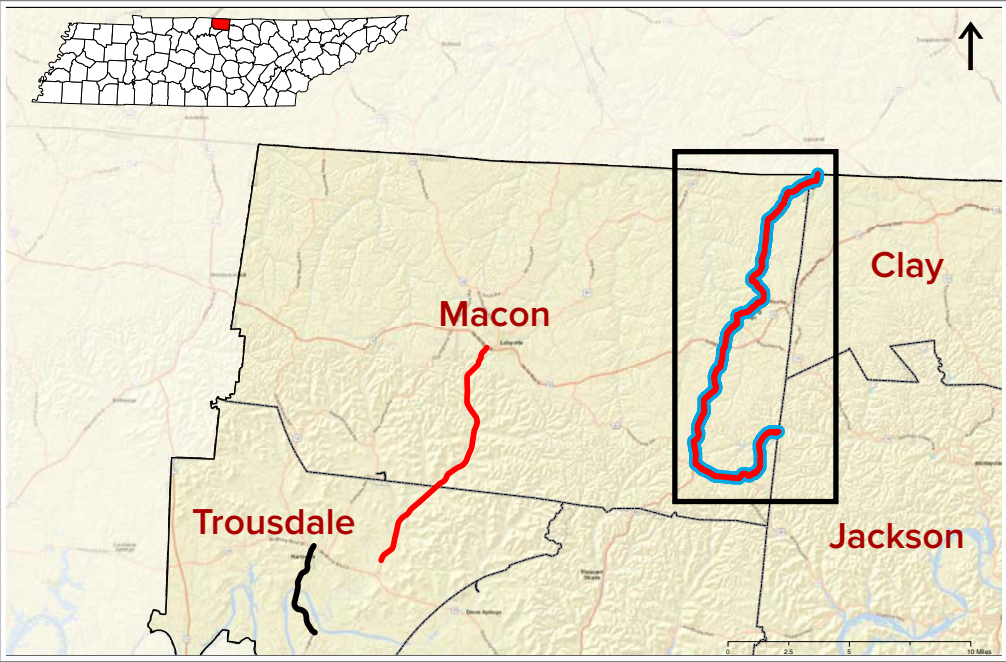




SR-56

Macon County 124502.00

PIN	Project Type & Description <sup>1</sup>	Status & Funding <sup>2</sup>	Cost <sup>3</sup>	2016 AADT <sup>4</sup>	2040 AADT <sup>5</sup>	2016 Truck AADT <sup>6</sup>	2040 Truck AADT <sup>7</sup>	2010 V/C Ratio <sup>8</sup>	2040 V/C Ratio <sup>9</sup>	Section Crash Rate <sup>10</sup>
124502.00	From TN/KY state line through Red Boiling Springs to Macon/ Jackson County line - <b>Legislative: Various Safety Projects</b>	Active	\$150,000	70 - 3,290	98 - 4,494	75 - 101	19 - 405	0.003 - 0.132	0.003 - 0.174	0.510



Data Notes:

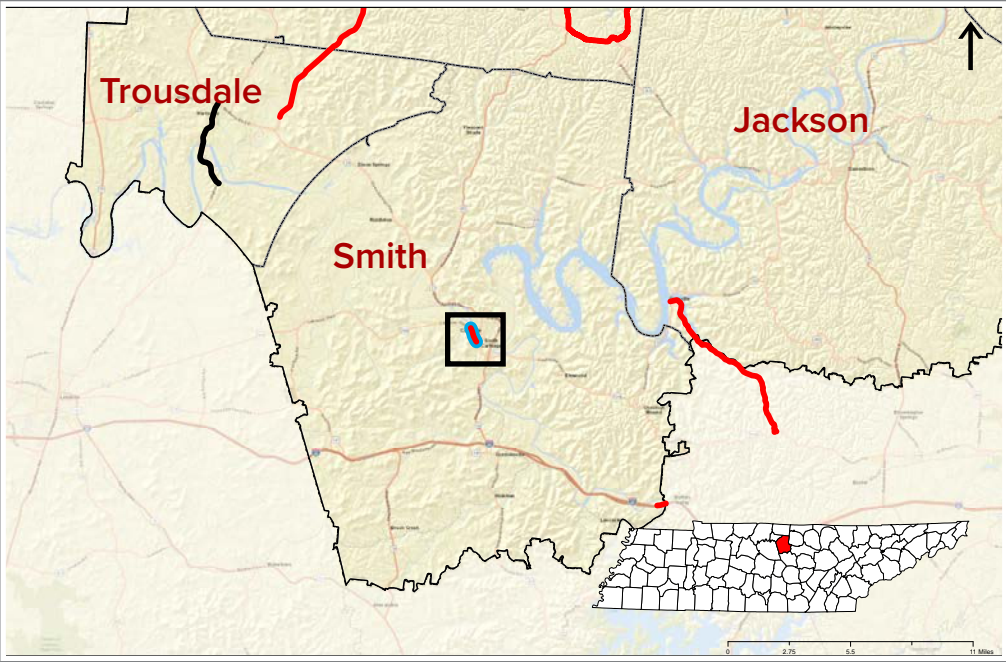
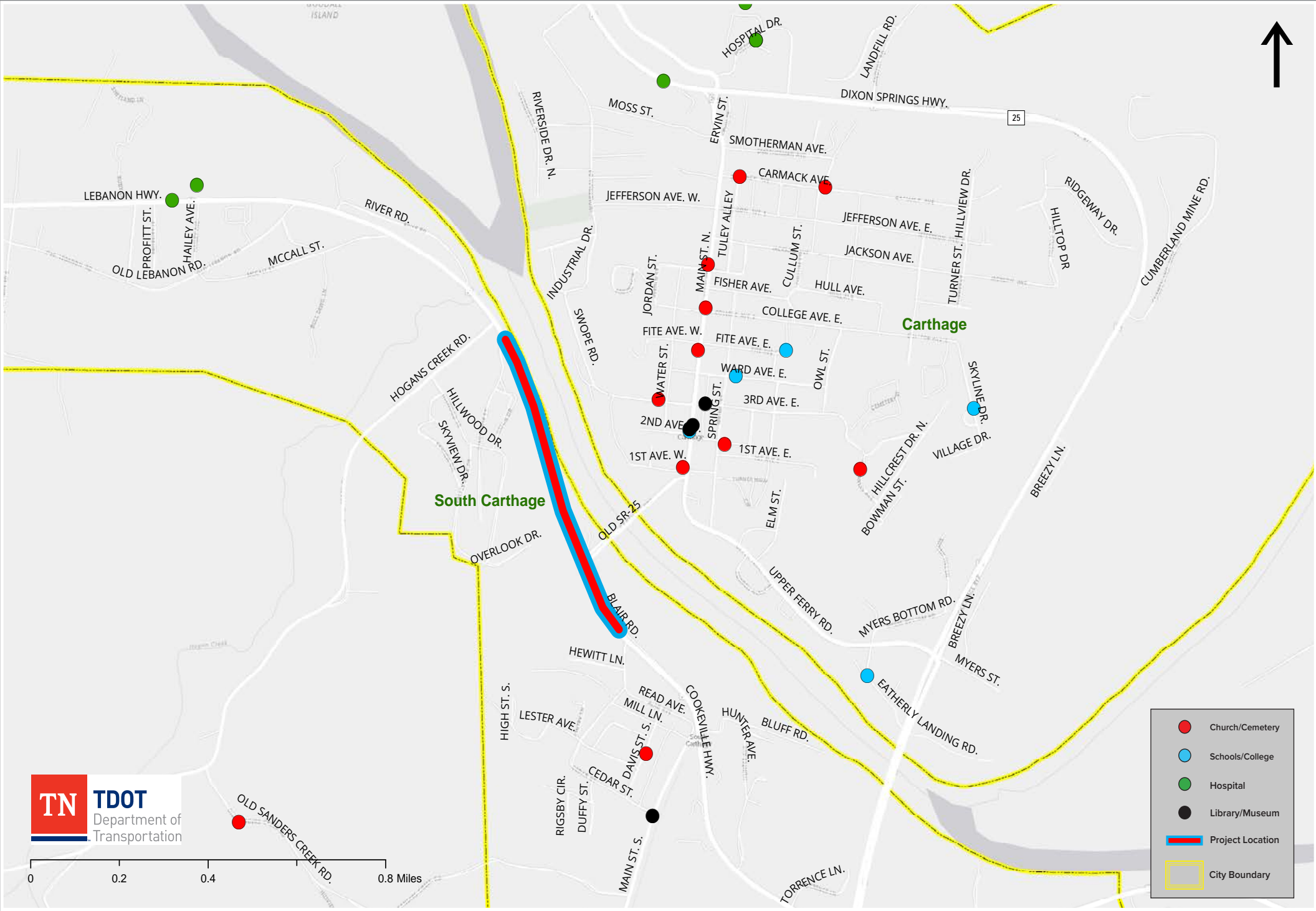
- 1-3 - Project Type & Description, Status & Funding, and Cost information were gathered from PPRM (Project Programming Resource Management) and the Statewide Project Overview Tracker (SPOT) Map.
- 4 - Average Annual Daily Traffic, TRIMS 2016 Data.
- 5 - Forecasted Average Annual Daily Traffic for the year 2040, forecasted data using the Statewide Travel Demand Model.
- 6 - Average Annual Daily Traffic for Trucks, TRIMS 2016 Data.
- 7 - Forecasted Average Annual Daily Truck Traffic for the year 2040, forecasted data using the Statewide Travel Demand Model.
- 8 - Traffic Volume/Traffic Capacity for the year 2010, calculated using the Statewide Travel Demand Model. A V/C ratio of 0.5 is generally considered average and as the value increases and nears 1, it represents a road that is becoming more congested.
- 9 - Traffic Volume/Traffic Capacity for the year 2040, calculated using the Statewide Travel Demand Model. A V/C ratio of 0.5 is generally considered average and as the value increases and nears 1, it represents a road that is becoming more congested.
- 10 - Section crash rates are the number of crashes per million vehicle miles. Higher numbers do not necessarily mean that more crashes occur and may or may not signify safety deficiencies. These crash rates were calculated using data from 2012-2014 and compared against the 2012-2014 statewide average for each road type. The crash rates were then measured against the Statewide Crash Average for each individual type of road to determine the appropriate color ramp.





SR-24 (US-70N)  
Smith County, 123045.00

PIN	Project Type & Description <sup>1</sup>	Status & Funding <sup>2</sup>	Cost <sup>3</sup>	2016 AADT <sup>4</sup>	2040 AADT <sup>5</sup>	2016 Truck AADT <sup>6</sup>	2040 Truck AADT <sup>7</sup>	2010 V/C Ratio <sup>8</sup>	2040 V/C Ratio <sup>9</sup>	Section Crash Rate <sup>10</sup>
123045.00	From near Waggoner St. to near Cedar St. (Near Cordell Hull Bridge) (IA) - Rock Fall Mitigation	Active	\$6,000,000	5,490 - 6,540	6,496 - 7,879	165 - 196	107 - 143	0.181 - 0.22	0.203 - 0.299	0.644



Data Notes:

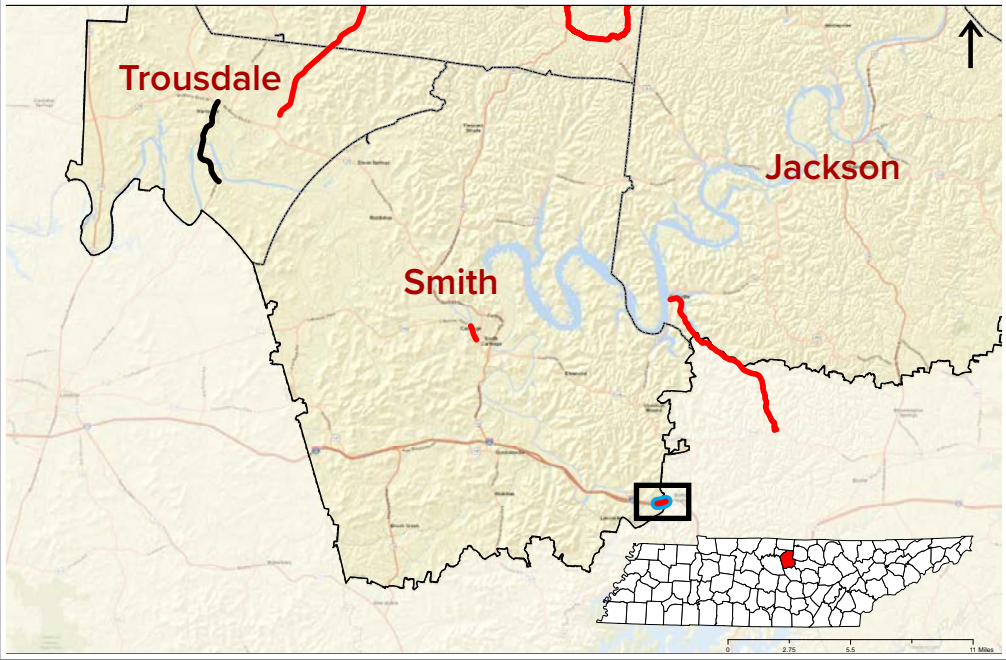
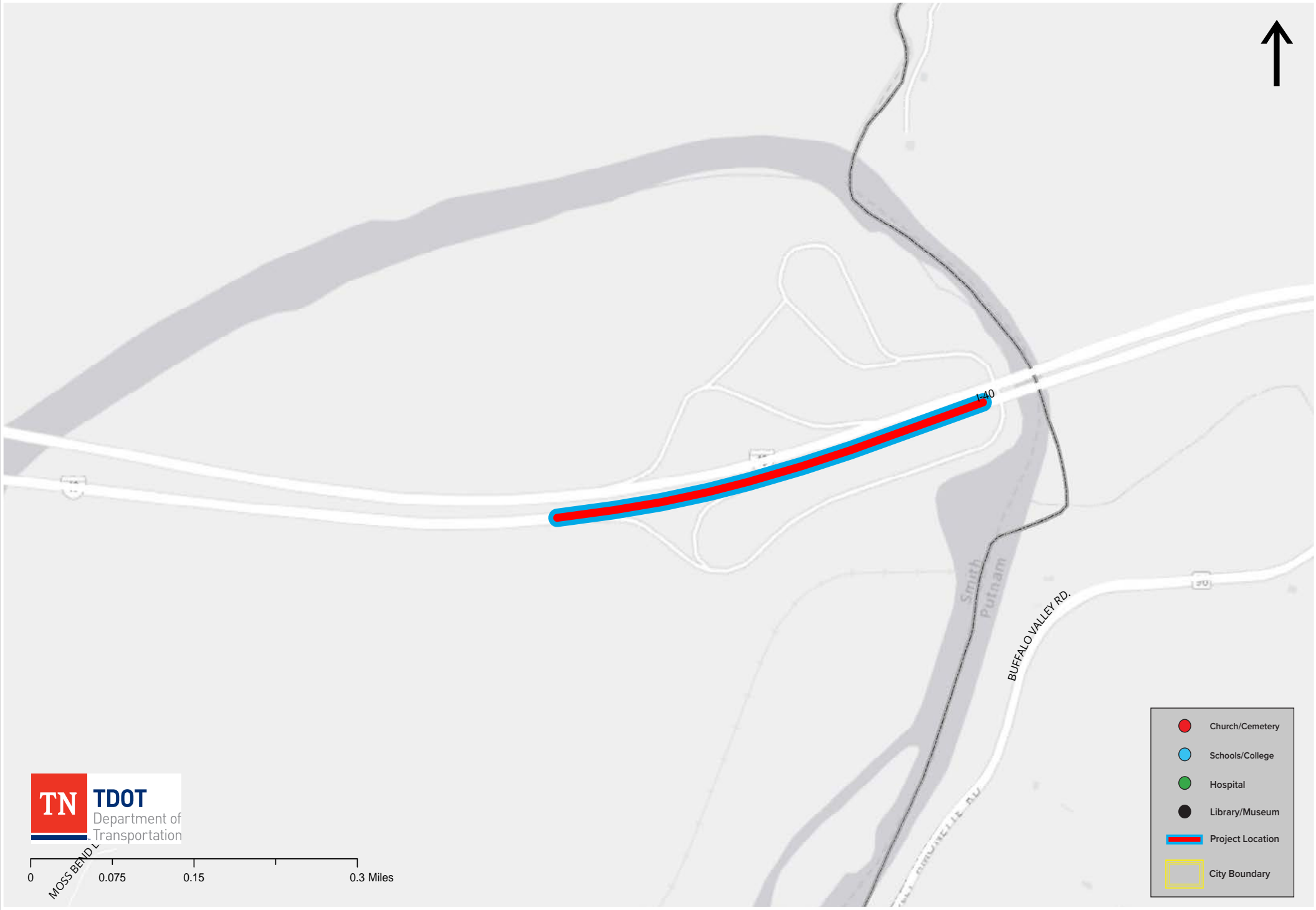
- 1-3 - Project Type & Description, Status & Funding, and Cost information were gathered from PPRM (Project Programming Resource Management) and the Statewide Project Overview Tracker (SPOT) Map.
- 4 - Average Annual Daily Traffic, TRIMS 2016 Data.
- 5 - Forecasted Average Annual Daily Traffic for the year 2040, forecasted data using the Statewide Travel Demand Model.
- 6 - Average Annual Daily Traffic for Trucks, TRIMS 2016 Data.
- 7 - Forecasted Average Annual Daily Truck Traffic for the year 2040, forecasted data using the Statewide Travel Demand Model.
- 8 - Traffic Volume/Traffic Capacity for the year 2010, calculated using the Statewide Travel Demand Model. A V/C ratio of 0.5 is generally considered average and as the value increases and nears 1, it represents a road that is becoming more congested.
- 9 - Traffic Volume/Traffic Capacity for the year 2040, calculated using the Statewide Travel Demand Model. A V/C ratio of 0.5 is generally considered average and as the value increases and nears 1, it represents a road that is becoming more congested.
- 10 - Section crash rates are the number of crashes per million vehicle miles. Higher numbers do not necessarily mean that more crashes occur and may or may not signify safety deficiencies. These crash rates were calculated using data from 2012-2014 and compared against the 2012-2014 statewide average for each road type. The crash rates were then measured against the Statewide Crash Average for each individual type of road to determine the appropriate color ramp.



I-40

Smith County, 124706.00

PIN	Project Type & Description <sup>1</sup>	Status & Funding <sup>2</sup>	Cost <sup>3</sup>	2016 AADT <sup>4</sup>	2040 AADT <sup>5</sup>	2016 Truck AADT <sup>6</sup>	2040 Truck AADT <sup>7</sup>	2010 V/C Ratio <sup>8</sup>	2040 V/C Ratio <sup>9</sup>	Section Crash Rate <sup>10</sup>
124706.00	"Caney Fork River" Welcome Center renovation (IA) - <b>Legislative: Weigh Station or Rest Area Improvements</b>	Active	\$4,250,000	42,640	49,557 - 51,054	10,660	29,105 - 35,319	0.319	0.465 - 0.485	0.286



Data Notes:

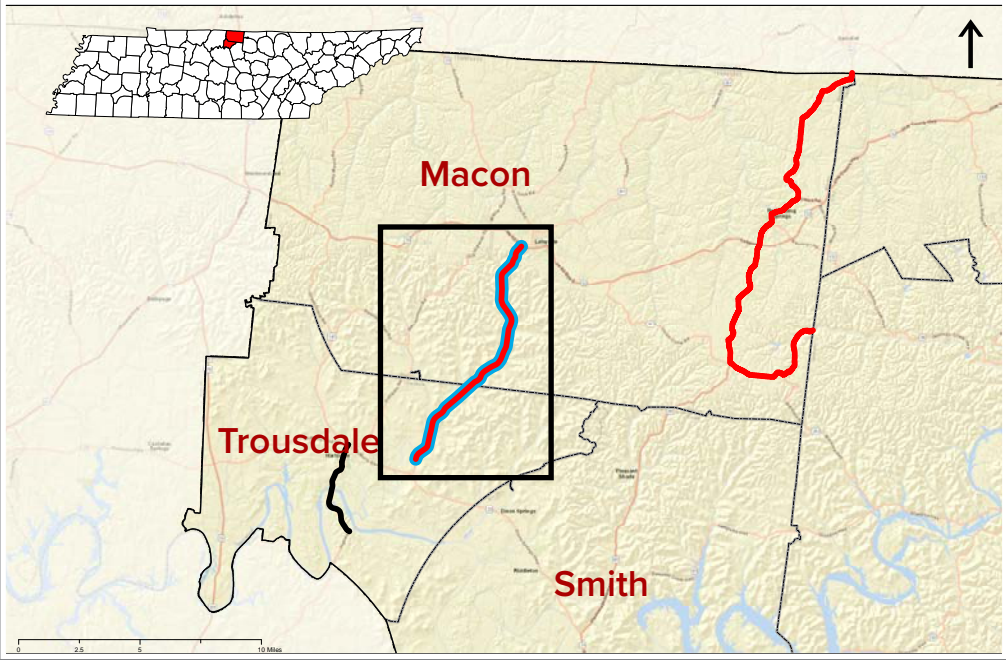
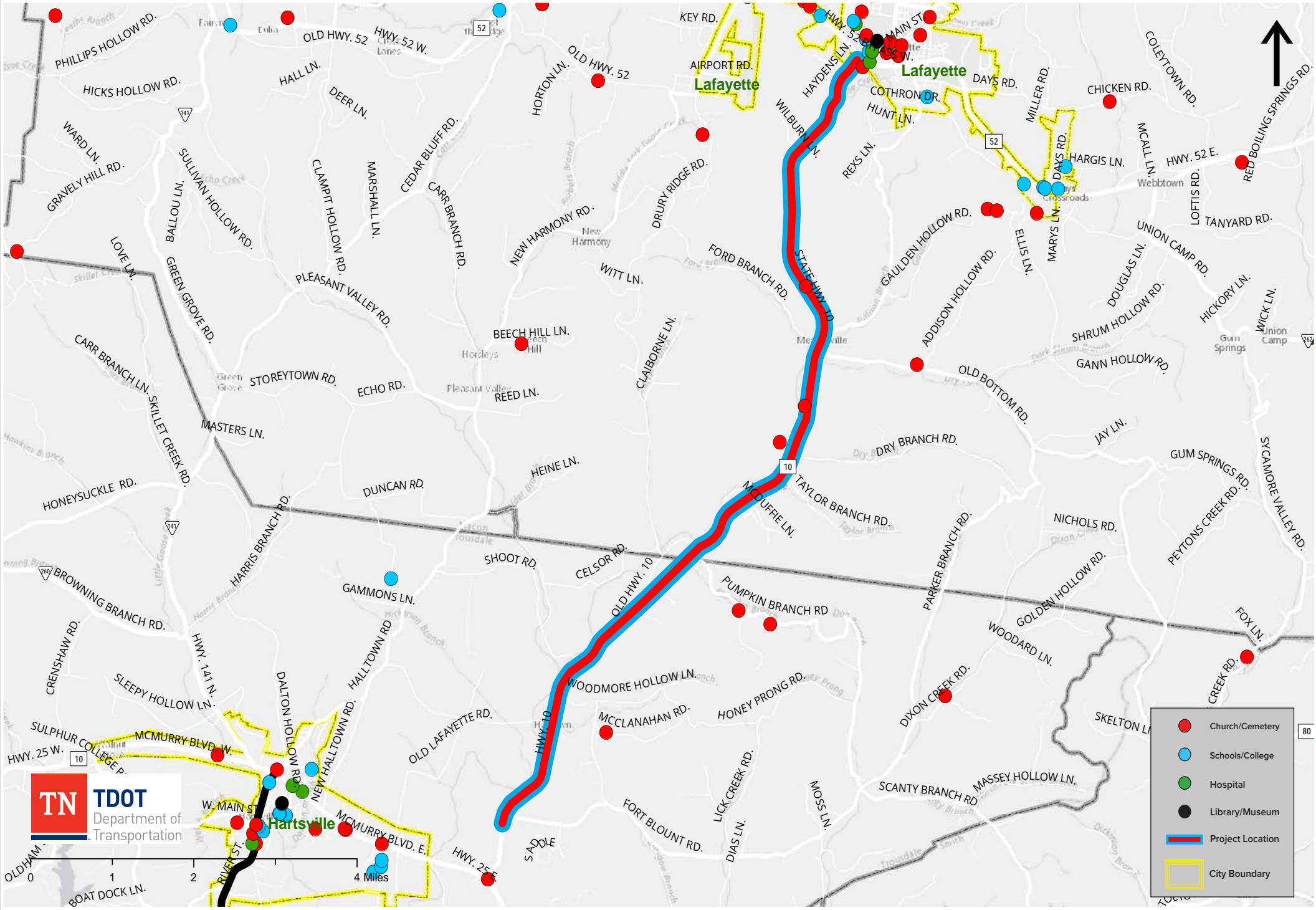
- 1-3 - Project Type & Description, Status & Funding, and Cost information were gathered from PPRM (Project Programming Resource Management) and the Statewide Project Overview Tracker (SPOT) Map.
- 4 - Average Annual Daily Traffic, TRIMS 2016 Data.
- 5 - Forecasted Average Annual Daily Traffic for the year 2040, forecasted data using the Statewide Travel Demand Model.
- 6 - Average Annual Daily Traffic for Trucks, TRIMS 2016 Data.
- 7 - Forecasted Average Annual Daily Truck Traffic for the year 2040, forecasted data using the Statewide Travel Demand Model.
- 8 - Traffic Volume/Traffic Capacity for the year 2010, calculated using the Statewide Travel Demand Model. A V/C ratio of 0.5 is generally considered average and as the value increases and nears 1, it represents a road that is becoming more congested.
- 9 - Traffic Volume/Traffic Capacity for the year 2040, calculated using the Statewide Travel Demand Model. A V/C ratio of 0.5 is generally considered average and as the value increases and nears 1, it represents a road that is becoming more congested.
- 10 - Section crash rates are the number of crashes per million vehicle miles. Higher numbers do not necessarily mean that more crashes occur and may or may not signify safety deficiencies. These crash rates were calculated using data from 2012-2014 and compared against the 2012-2014 statewide average for each road type. The crash rates were then measured against the Statewide Crash Average for each individual type of road to determine the appropriate color ramp.





SR-10  
Trousdale-Macon  
Counties, 103773.03

PIN	Project Type & Description <sup>1</sup>	Status & Funding <sup>2</sup>	Cost <sup>3</sup>	2016 AADT <sup>4</sup>	2040 AADT <sup>5</sup>	2016 Truck AADT <sup>6</sup>	2040 Truck AADT <sup>7</sup>	2010 V/C Ratio <sup>8</sup>	2040 V/C Ratio <sup>9</sup>	Section Crash Rate <sup>10</sup>
103773.03	(Hartsville Rd.) Safety Improvements from Lafayette to Hartsville - <b>Safety</b>	Active	\$2,000,000	4,160 - 4,860	5,227 - 5,913	292 - 398	362 - 395	0.119 - 0.138	0.164 - 0.185	0.404



Data Notes:

- 1-3 - Project Type & Description, Status & Funding, and Cost information were gathered from PPRM (Project Programming Resource Management) and the Statewide Project Overview Tracker (SPOT) Map.
- 4 - Average Annual Daily Traffic, TRIMS 2016 Data.
- 5 - Forecasted Average Annual Daily Traffic for the year 2040, forecasted data using the Statewide Travel Demand Model.
- 6 - Average Annual Daily Traffic for Trucks, TRIMS 2016 Data.
- 7 - Forecasted Average Annual Daily Truck Traffic for the year 2040, forecasted data using the Statewide Travel Demand Model.
- 8 - Traffic Volume/Traffic Capacity for the year 2010, calculated using the Statewide Travel Demand Model. A V/C ratio of 0.5 is generally considered average and as the value increases and nears 1, it represents a road that is becoming more congested.
- 9 - Traffic Volume/Traffic Capacity for the year 2040, calculated using the Statewide Travel Demand Model. A V/C ratio of 0.5 is generally considered average and as the value increases and nears 1, it represents a road that is becoming more congested.
- 10 - Section crash rates are the number of crashes per million vehicle miles. Higher numbers do not necessarily mean that more crashes occur and may or may not signify safety deficiencies. These crash rates were calculated using data from 2012-2014 and compared against the 2012-2014 statewide average for each road type. The crash rates were then measured against the Statewide Crash Average for each individual type of road to determine the appropriate color ramp.

